

## DO I NEED A REFERRAL?

As with many medical imaging procedures CT angiography utilizes X-rays as well as a contrast injection to produce images. We therefore require a **referral from a medical practitioner** who will also advise you whether the study is appropriate for you. The results of the test will be then forwarded to your GP or specialist who then will explain results and initiate any management if required.

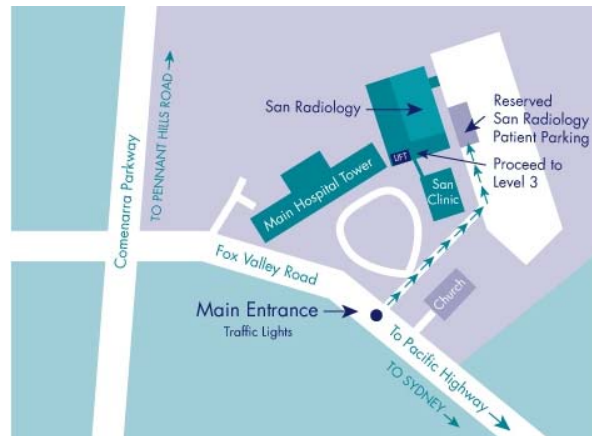
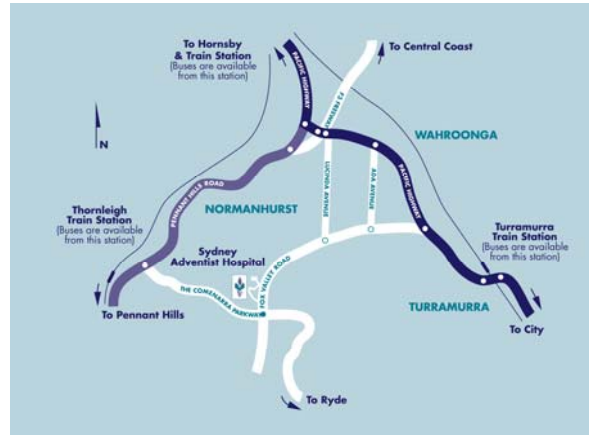
**PLEASE BE SURE TO INFORM OUR STAFF IF YOU ARE OR THINK YOU MAY BE PREGNANT.**

*At San Radiology CT, you will receive the best treatment from our highly qualified and experienced medical staff.*



Image of a cardiac by-pass.

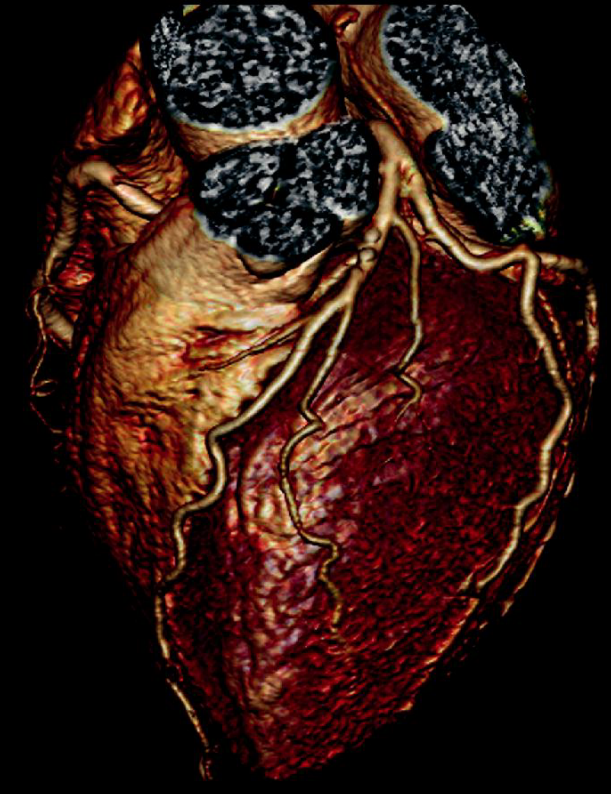
## How to get to the San



**For bookings please phone  
San Radiology on 9487 9840**



Level 3, Sydney Adventist Hospital 185 Fox  
Valley Road, Wahroonga NSW 2076  
Telephone: 02 9487 9840 Facsimile: 02 9487 9845  
Website: [www.sanradiology.org.au](http://www.sanradiology.org.au)



**Dual Source Cardiac CT**  
patient information



# Dual Source Cardiac CT

## HOW IS DUAL SOURCE CORONARY CT ANGIOGRAPHY DIFFERENT FROM EXISTING TECHNOLOGY?

Australia's first Dual Source CT has two x-ray tubes instead of one and is able to generate up to 128 slices per rotation. This allows hundreds of images to be produced within a single short breath hold.

The high speed of the scanner allows us to completely "freeze" heart motion, therefore giving more accurate, motionless images. There is also no longer a need to *give patients medication to slow down the heart rate* (known as a beta-blocker) as was necessary with older single source technology, including 64-320 slice scanners. The scan is performed during a small injection of x-ray contrast ("dye") into a vein in the arm and uses the *most advanced radiation dose-reduction techniques currently available*.

## WHAT IS A CORONARY CT ANGIOGRAM STUDY USED FOR?

### 1. To Assess High-Risk Heart Disease Patients

For example:

- Men aged 45 and over with a family history of heart disease
- Women aged 55 and over with a family history of heart disease
- Current or previous smokers
- Individuals who are overweight and/or have high cholesterol.

Coronary CT Angiography can gauge the actual disease state of arteries and characterise the plaque within the artery rather than merely assessing an index of risk. The findings may then guide further investigation and treatment options.

*If your Coronary Artery CT is normal you can be confident that your coronary arteries are all clear, even if you have a strong family history of heart disease.*

### 2. Atypical Chest Pain Assessment

Not all chest pain is due to heart disease. Often patients will have had a number of other tests that may have been inconclusive. Our Coronary CT Angiography studies are able to rule out coronary artery disease as the cause of chest pain and also may be able to identify other causes for the patient's symptoms.

### 3. Following Cardiac Surgery or Intervention

It is a known fact that up to **40% of vein grafts and 10% of artery grafts fail within the first 10 years following surgery**. Our cardiac scans can confirm that the bypass grafts are still working and whether the underlying disease has progressed.

*Although older single source CT technology allowed us to do this to some degree, we can now perform these scans with much higher accuracy at any heart rate and on patients with irregular heart rhythms.* Some coronary artery stents may also be assessed using this technology.

### HOW LONG DOES THE SCAN TAKE?

The scan itself only takes around 6-15 seconds, depending on the patient's heart rate. Patients will spend approximately 15 minutes in the scan room including planning scans.

### HOW MUCH DOES A SCAN COST?

The cost of the scan is currently not Medicare rebateable. A submission for a rebate has been made to the Health Care

Commission, but we are not currently aware of if and when a rebate will be approved. Please phone San Radiology bookings on 9487 9840 for enquiry regarding fees for this scan.

### WHAT HAPPENS AFTER THE EXAMINATION?

When your scan is completed, our technologists will produce your images from the volume of data obtained. One of our radiologists specialised in cardiac imaging will then interpret the images obtained. Depending on the complexity of the findings, the time taken for analysis may vary. The results will then be forwarded to your doctor.

*Please advise our radiographer about your **follow-up appointment** with your referring physician.*

### ARE THERE ANY PRECAUTIONS I SHOULD BE AWARE OF?

When you are making your appointment you will be questioned about ANY medications that you are currently taking. For some cardiac CT studies it is necessary to cease certain medications prior to undergoing your scan. These medications include Viagra, Levitra & Cialis and must be stopped for 3 days prior to your appointment. You will be given all relevant details regarding preparation for the test by our bookings staff when you make your appointment.

### HOW CAN YOU HELP?

To obtain best image quality, it is necessary for you to hold your breath for up to 15 seconds. You will also be asked to fill in a consent form for the administration of the x-ray contrast (dye) injection that is necessary to highlight the blood vessels in the heart.

Please talk to our bookings staff, who will give you detailed information about how to prepare for the examination.

Please consult your physician beforehand concerning any allergies, and be sure to let the CT team know of your existing allergies and medications prior to undergoing your examination.