

BEST ANATOMICAL DETAIL

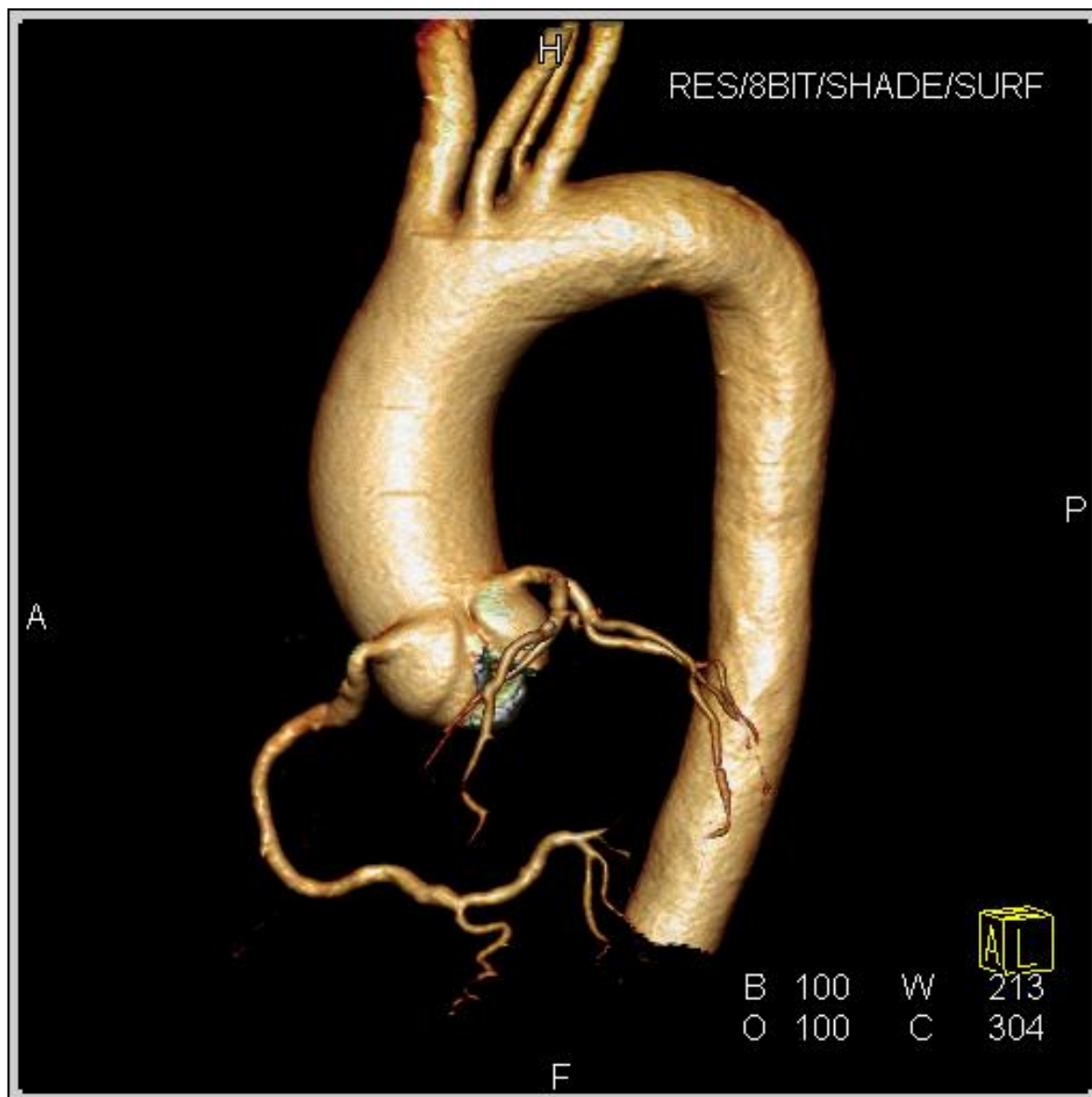
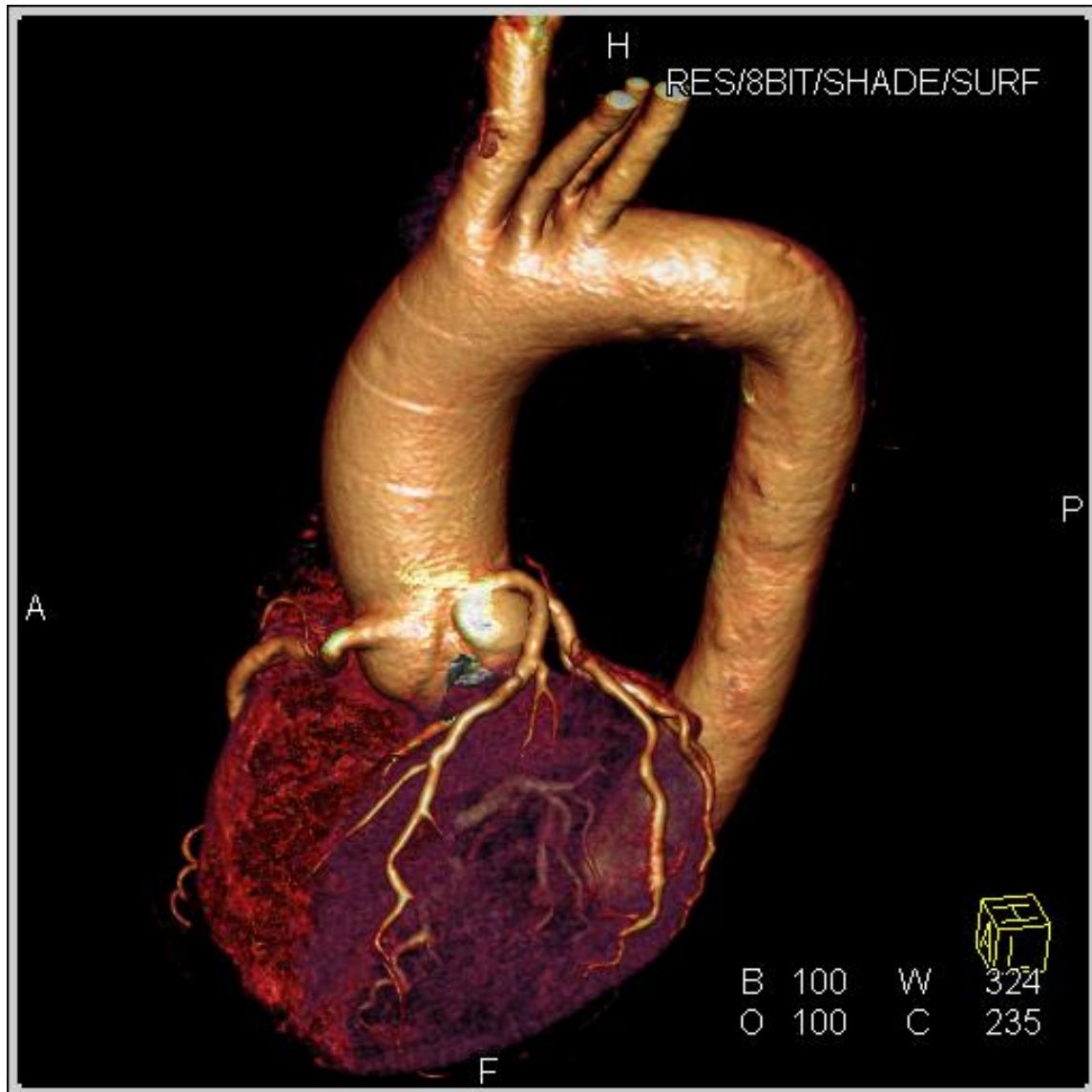


Image demonstrating how Dual Source CT is capable of obtaining best image detail for fine structures

Image of the Coronary & Surrounding Vessels (with the heart removed).
Scanned at San Radiology [30th October 2006]

BEST CARDIAC DETAIL



When compared to *any* other CT scanner...

Image of the heart & surrounding vessels obtained without the use of drugs to slow the heart rate.
This is currently not possible on any other CT scanner technology, other than Dual Source CT.
Scanned at San Radiology [30th October 2006]

BEST VASCULAR DETAIL

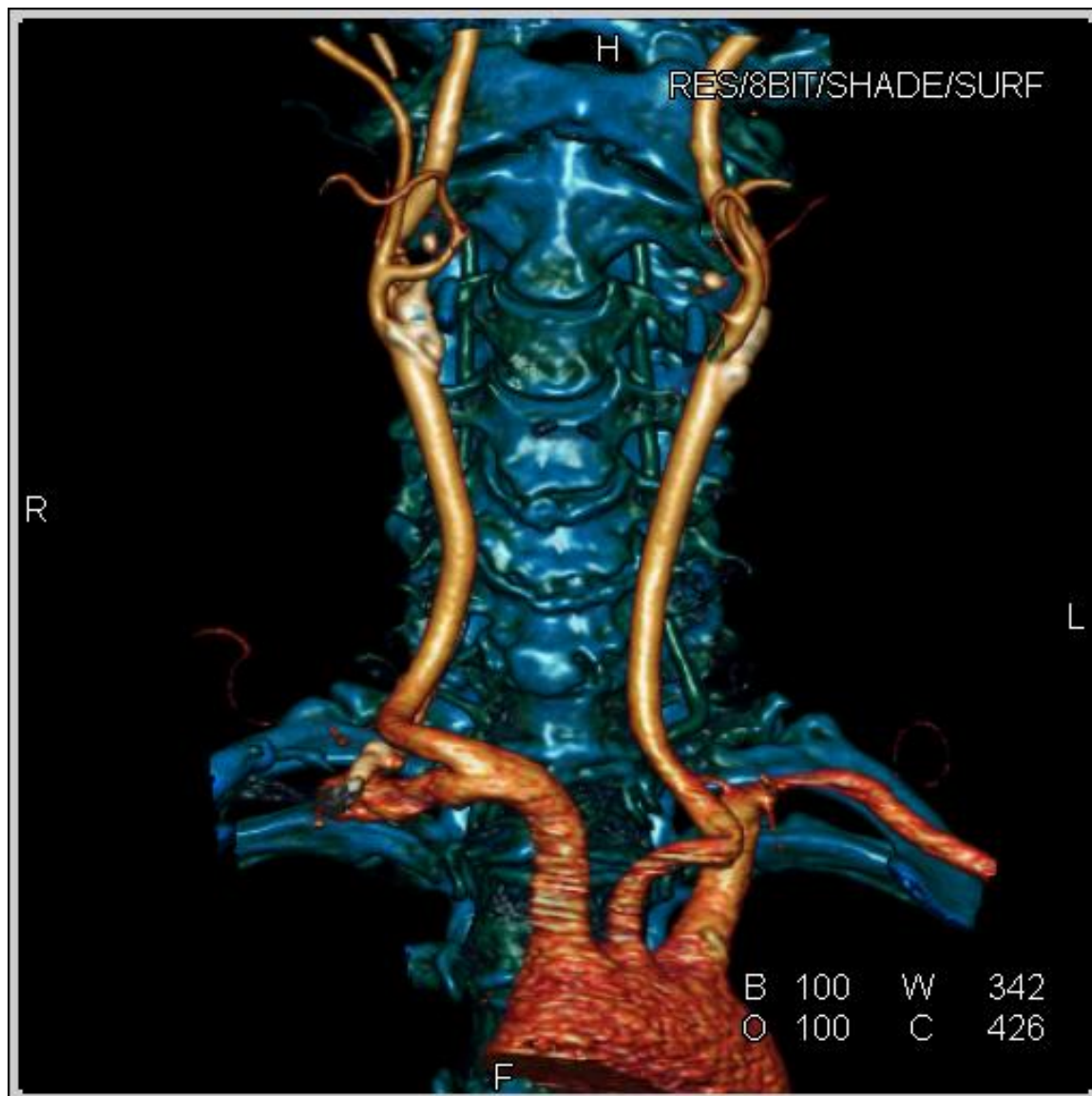
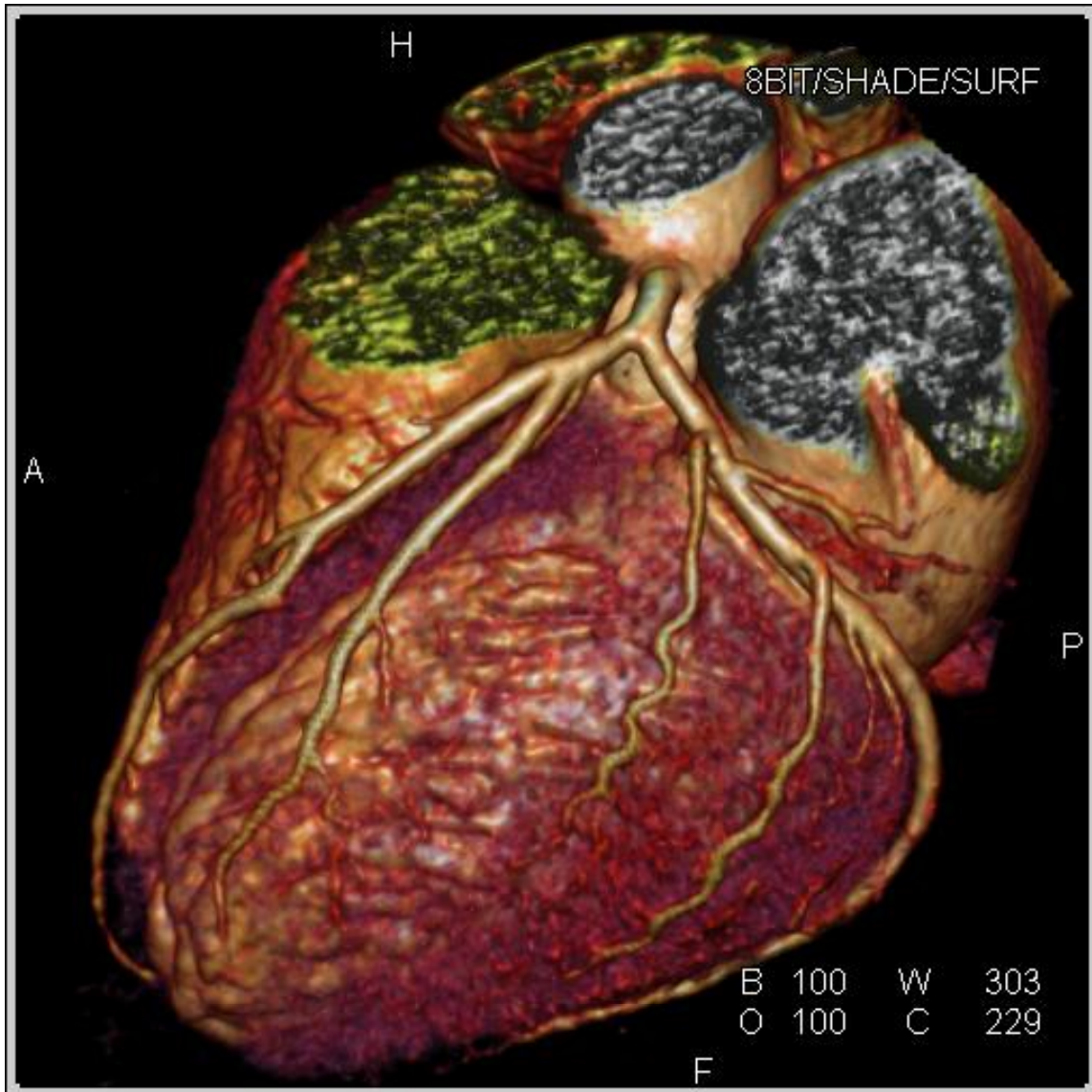


Image demonstrating excellent image clarity
for vascular structures

Image of the major neck vessels with soft tissue removed (bone shown in blue).
Scanned at San Radiology [14th November 2006]

FULL CARDIAC DETAIL



Only Dual Source CT is capable of obtaining best image quality for *all* cardiac structures without the use of beta-blockers.

Image of the heart and coronary vessels taken without the use of drugs to slow the heart rate. This is currently not possible on any other CT scanner technology, other than Dual Source CT.

Scanned at San Radiology [9th November 2006]